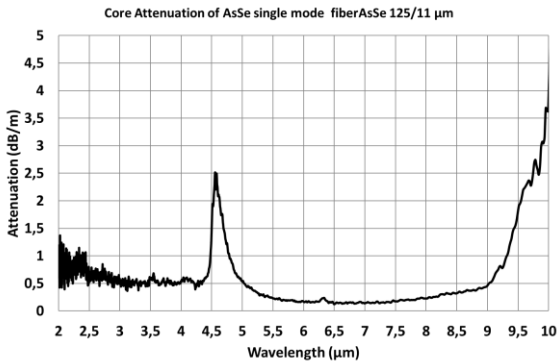
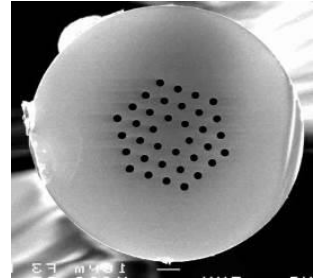


Single mode fiber

Single mode fiber:



- ✓ Single mode from 1,5 μm to 10 μm
- ✓ Excellent beam quality
- ✓ QCL Beam Delivery
- ✓ Supercontinuum generation
- ✓ Nonlinear effects

Reference	Glass	Core diameter	Cladding diameter	Coating	Wavelength range	Core/cladd offset	NA (calculated)	Zero dispersion wavelength
AsSe SM11	AsSe	11.5+/-0.3 μm	125 +/-2 μm	220 +/-20 μm	1,55-10 μm	<1.5 μm	0.15 @ 1.55 μm 0.45 @ 5μm 0.75 @ 10μm	≈4.8 μm

Attenuation (typical):
 $\lambda=1.55 \mu\text{m}; \alpha=1\text{dB/m}$
 $\lambda =7 \mu\text{m}; \alpha <0,3 \text{ dB/m}$

Optical fiber cables:



Reference	Fiber	Connectors	Ferrule	Jacket	Length	Core offset
Single mode fiber cable	AsSe SM11	FC/PC	2.5 mm	3mm 900 μm (on request)	[1-5] m	<3 μm

- Connectors: FC/PC
- Length: up to 5 m